

## GRADING NOTES

1. THE CONTRACTOR SHALL FIELD VERIFY THE ELEVATIONS OF THE BENCHMARKS FROM THE COMMENCING WORK POINT TO THE END POINTS OF THE WORK. THE ELEVATION OF EXISTING PIPE INVERTS, FLOOR ELEVATIONS, OR PAVEMENT WHERE MATCHING INTO EXISTING WORK. THE CONTRACTOR SHALL FIELD VERIFY HORIZONTAL CONTROL BY REFERENCING SHOWN COORDINATES TO KNOWN PROPERTY LINES. NOTIFY ENGINEER OF DISCREPANCIES IN EITHER VERTICAL OR HORIZONTAL CONTROL PRIOR TO PROCEEDING WITH WORK.
2. ALL UNSURFACED AREAS ARE TO RECEIVE FOUR INCHES OF TOPSOIL AND BE SEEDED, MULCHED AND WATERED UNTIL A HEALTHY STAND OF GRASS IS OBTAINED.
3. THIS GRADING PLAN IS BASED ON A TOPOGRAPHICAL SURVEY DATED JUNE 7, 2004, AERIAL PHOTOGRAPHY AND SURVEY INFORMATION BY OTHERS. SOME FIELD ADJUSTMENTS MAY BE NECESSARY AT POINTS WHERE PROPOSED GRADES MEET EXISTING. REVIEW ANY REQUIRED CHANGES WITH THE ENGINEER PRIOR TO CONSTRUCTION OF WORK.
4. THE MAXIMUM SLOPE RATIO ON CUT/FILL SLOPES IS 3 HORIZONTAL TO 1 VERTICAL.
5. PROPERTY CORNERS SHALL BE CAREFULLY PROTECTED UNTIL THEY HAVE BEEN REFERENCED BY A PROFESSIONAL LAND SURVEYOR. PROPERTY MONUMENTS DISTURBED BY THE CONTRACTOR'S OPERATIONS SHALL BE REPLACED AT THE CONTRACTOR'S EXPENSE.
6. SOD AND STAKE DITCH LINES WITH FLOW LINE SLOPES GREATER THAN 3% GRADE.

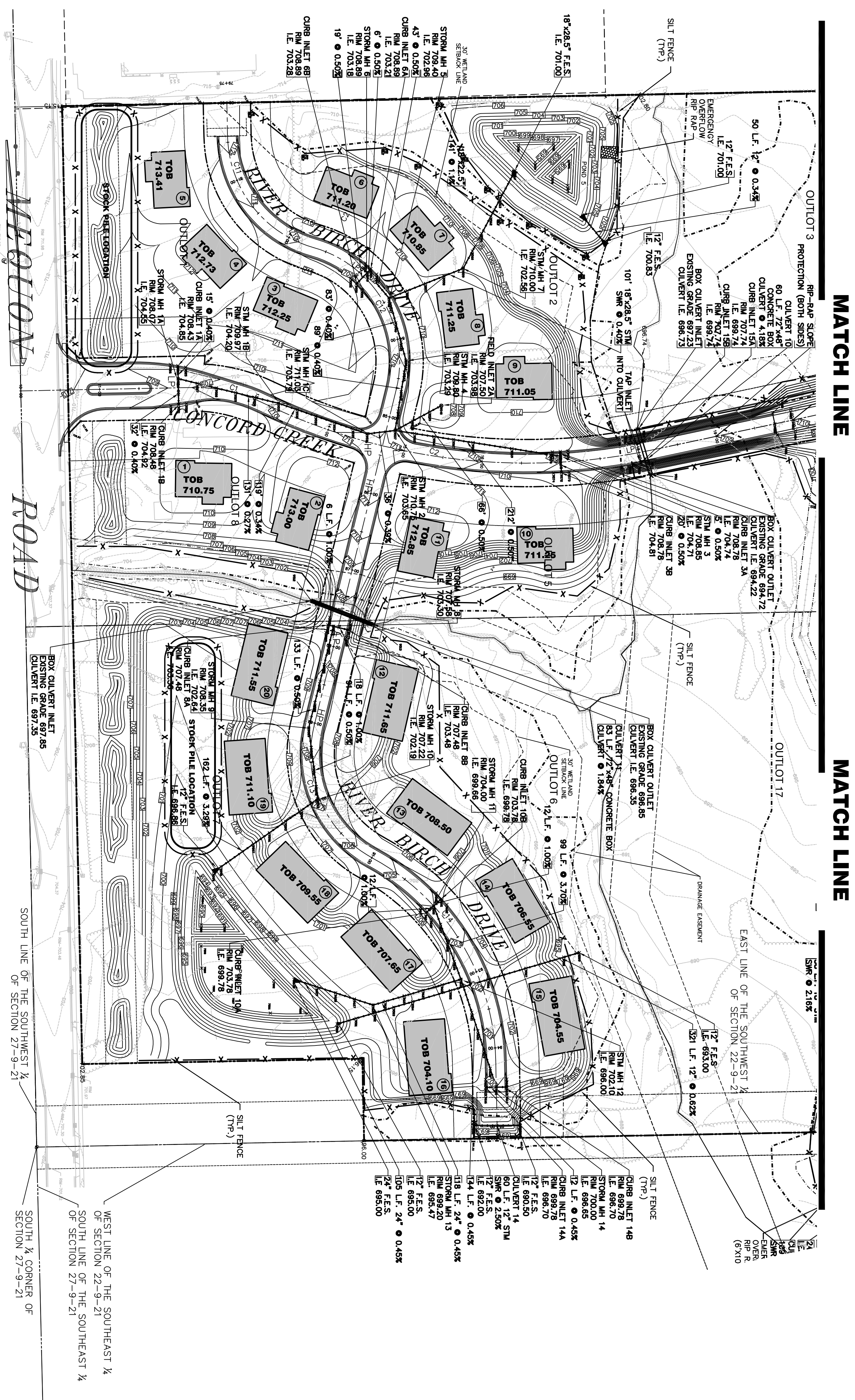
## NOTES

1. ALL PAVEMENT WIDTHS SHALL BE 27' AREAS WITH URBAN CROSS SECTION.
2. ALL PAVEMENT WIDTHS SHALL BE 22' IN AREAS WITH RURAL CROSS SECTION. WIDTHS SHALL BE 60' WITH THE EXCEPTION OF THE INTERSECTION OF CONCORD GREEK DRIVE AND MEQUON ROAD.

## LEGEND

- × [Symbol] TOP OF PAVEMENT ELEVATION
- × [Symbol] FINISHED GRADE ELEVATION
- [Symbol] PROPOSED CONTOUR
- [Symbol] EXISTING CONTOUR
- [Symbol] DIRECTION OF SHEET FLOW
- [Symbol] FLARED END SECTION
- [Symbol] STORM SEWER FLOWING
- [Symbol] EXISTING STORM SEWER
- [Symbol] PROPOSED SILT FENCE
- [Symbol] WETLAND
- [Symbol] EASEMENT/SETBACK AS DESIGNATED ON PLAN
- [Symbol] RIGHT-OF-WAY
- LP ROAD PROFILE LOW POINT, SEE PLAN AND PROFILES
- HP ROAD PROFILE HIGH POINT, SEE PLAN AND PROFILES

ITEM	QUANTITY
CURB INLETS	14
FIELD INLETS	7
SANITARY MANHOLE	—
STORM MANHOLE	16
HYDRANTS	—
8" GATE VALVES	—
12" GATE VALVES	—
8" WATER	—
12" WATER	—
SANITARY SEWER	—
STORM SEWER	3,908 LF



MATCH LINE

MATCH LINE

## CURVE DATA

SHEET 3 OF 35			SHEET 4 OF 35		
CURVE	R	L	Ton	Δ	Δ
C1	200.00	191.19	93.71	47.73	2650.46°
C2	770.00	230.27	506.91	263.02	3743.09°
C3	220.00	52.16	26.20	13.35	335.03°
C4	130.00	210.41	36.36	18.44	92.44°
C5	270.00	488.26	343.18	100.18	35.64°
C6	2300.00	297.53	148.98	72.43°	103.96°
C7	270.00	472.66	323.50	100.18	35.64°
C8	2030.00	852.23	432.48	240.31	103.13°
C9	220.00	400.06	282.55	144.44	104.04°
C10	330.00	257.65	173.59	88.80	135.80°
C11	150.00	191.19	93.71	47.73	2650.46°
C12	150.00	230.27	506.91	263.02	3743.09°
C13	150.00	196.82	115.47	51.04	75.10°
C14	300.00	315.48	174.09	60.15	60.15°
C15	236.72	222.03	119.94	53.44	22.22°
C16	80.00	149.54	79.59	46.17	83.53°
C17	1000.00	291.09	178.17	83.53	32.32°
C18	200.00	291.09	178.17	83.53	32.32°
C19	5000.00	565.70	234.10	117.59	62.85°
C20	1000.00	234.10	117.59	57.46	137.46°

**DIGGERS HOTLINE**  
 TOLL FREE (800) 242-8511  
 MILWAUKEE AREA (414) 239-1181  
 HEARING IMPAIRED TDD (800) 542-2289  
 WWW.DIGGERSHOTLINE.COM

NO.	ITEM	DATE
3	REVISED GRADING LOT 8	FEBRUARY 11, 2005
4	TRAFFIC CALMING DEVICE	MAY 2, 2005
5	UPDATE GRADING PLAN FOR SELECTED LOTS	OCTOBER 25, 2005
6	ISSUE FOR PHASE II CONSTRUCTION	DECEMBER 20, 2005

PLOTTING SCALE: H: 1" = 80'

DRAWN BY: TVS  
 CHECKED BY: EPN  
 DATE: JULY 26, 2004

**McCLURE ENGINEERING ASSOCIATES, INC.**  
 5417 North 118th Court Milwaukee, Wisconsin 53225  
 (414) 616-4880 FAX (414) 616-4885

**GRADING AND DRAINAGE PLAN**  
**CONCORD 19 DEVELOPMENT**  
 MEQUON ROAD MEQUON, WISCONSIN  
 FILE NAME: T:\LANDPROJECTS\04068 GP5\dwg\04068E8.dwg  
 JOB NUMBER: 08-15-04-089